

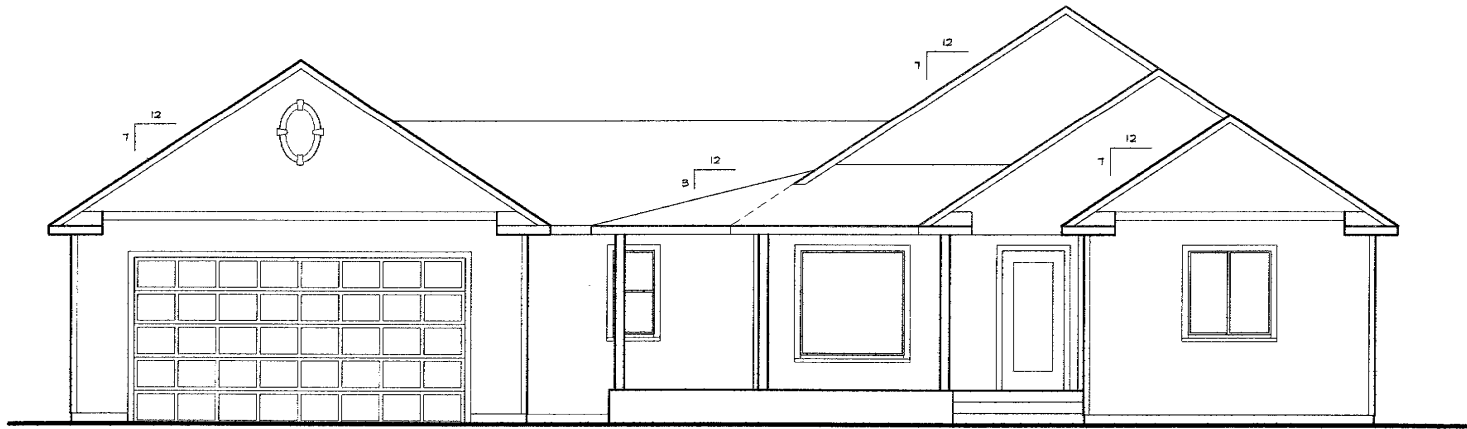
BASEMENT PLAN

1/4" = 1'-0"

A NEW SPEC HOME by:

07.18.05

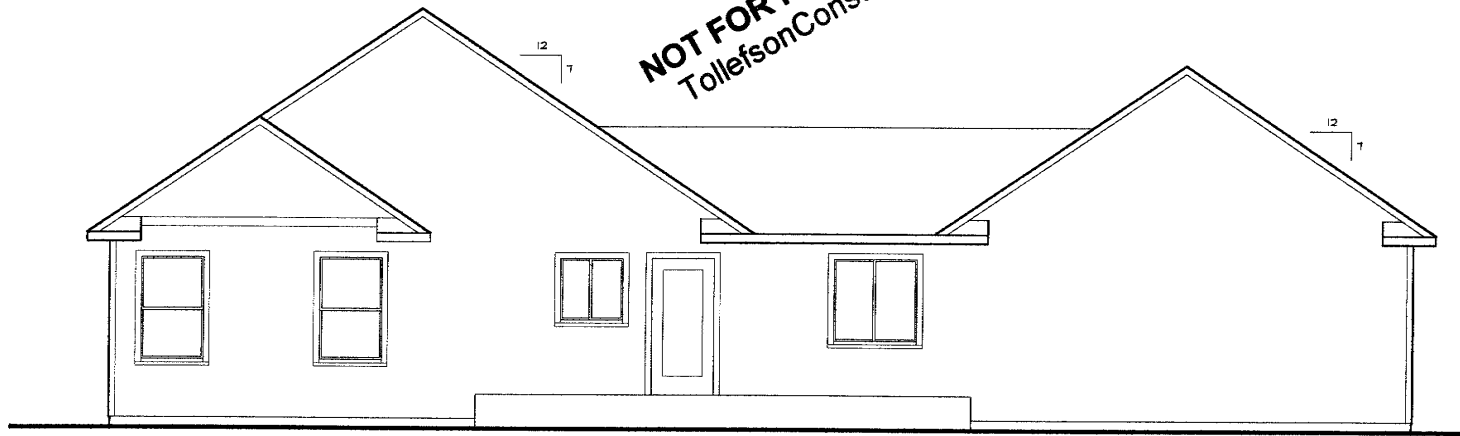
A2



FRONT ELEVATION

1/4" = 1'-0"

**COPY RIGHT
NOT FOR REPRODUCTION!!**
TollefsonConstruction.com



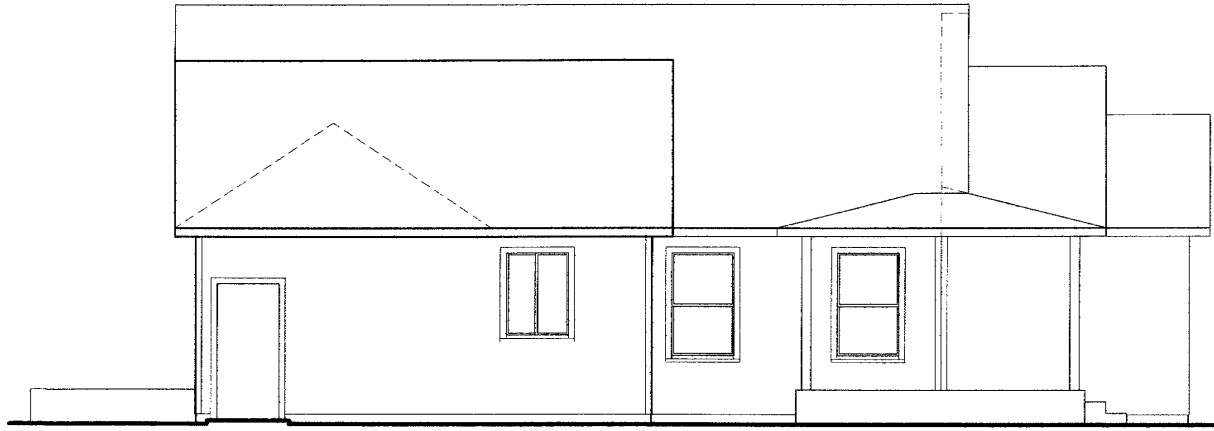
BACK ELEVATION

1/4" = 1'-0"

A NEW SPEC HOME by:

07.18.05

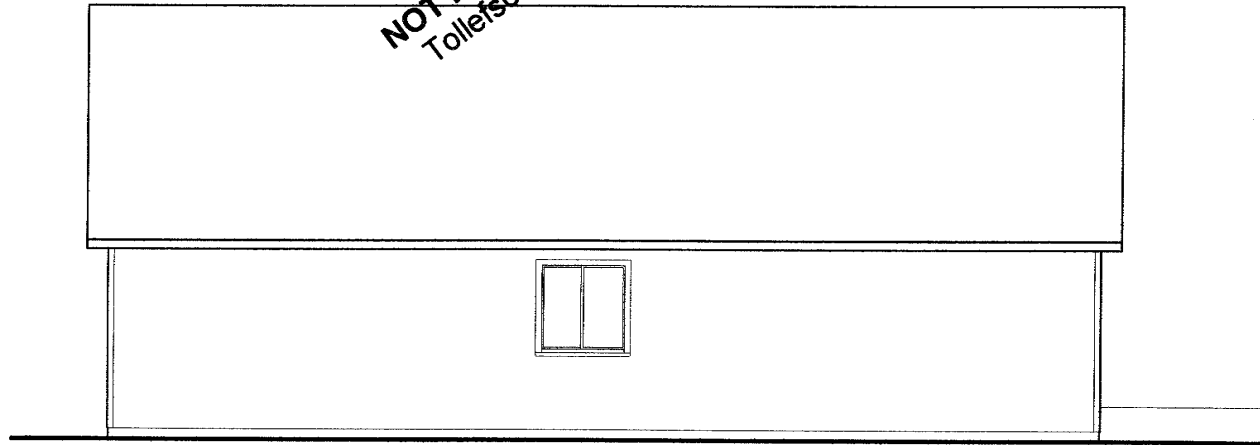
A3



LEFT ELEVATION

1/4" = 1'-0"

**COPY RIGHT
NOT FOR REPRODUCTION**
TollefsonConstruction.com



RIGHT ELEVATION

1/4" = 1'-0"

A NEW SPEC HOME by:

07.18.05

A4