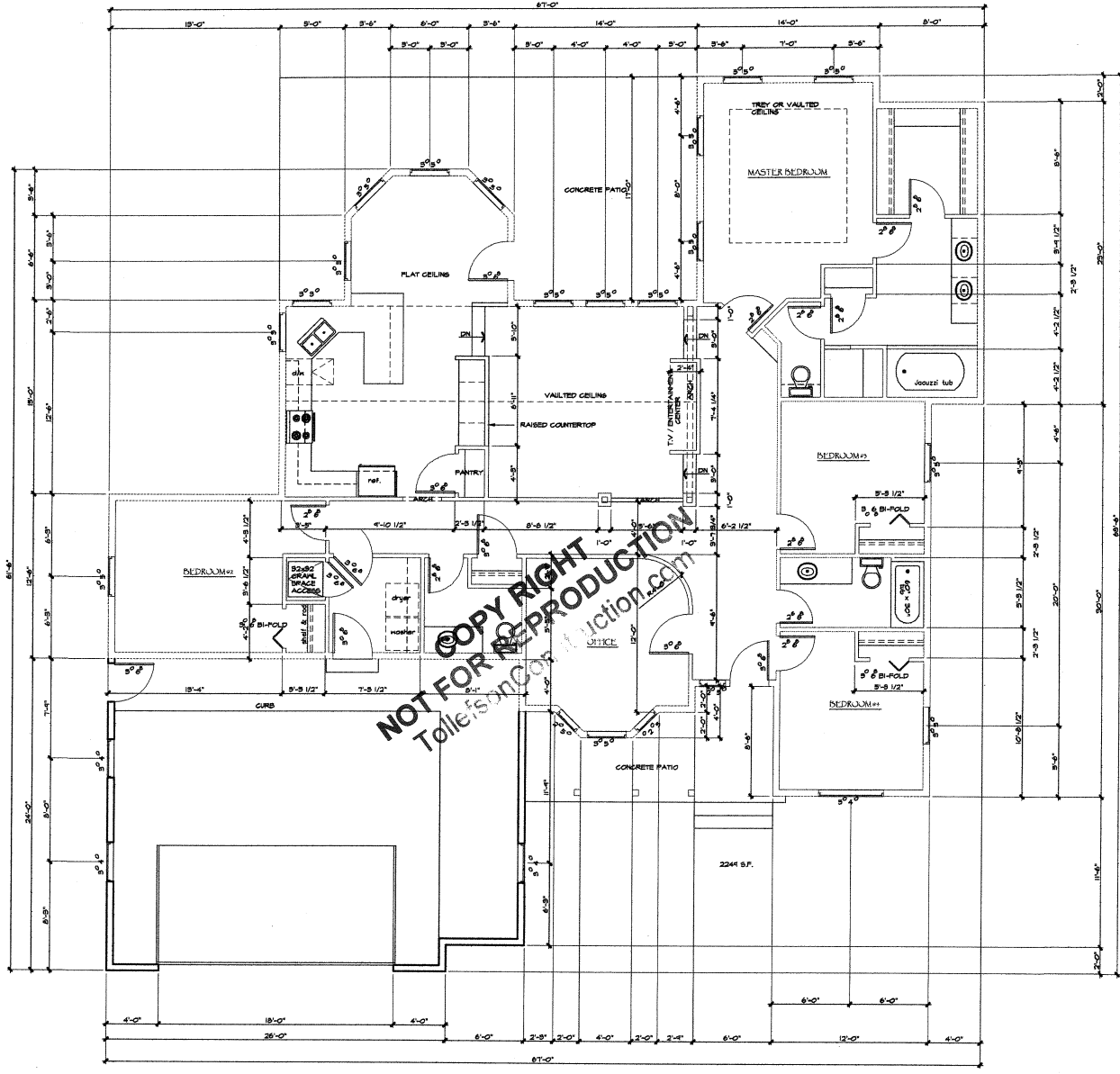


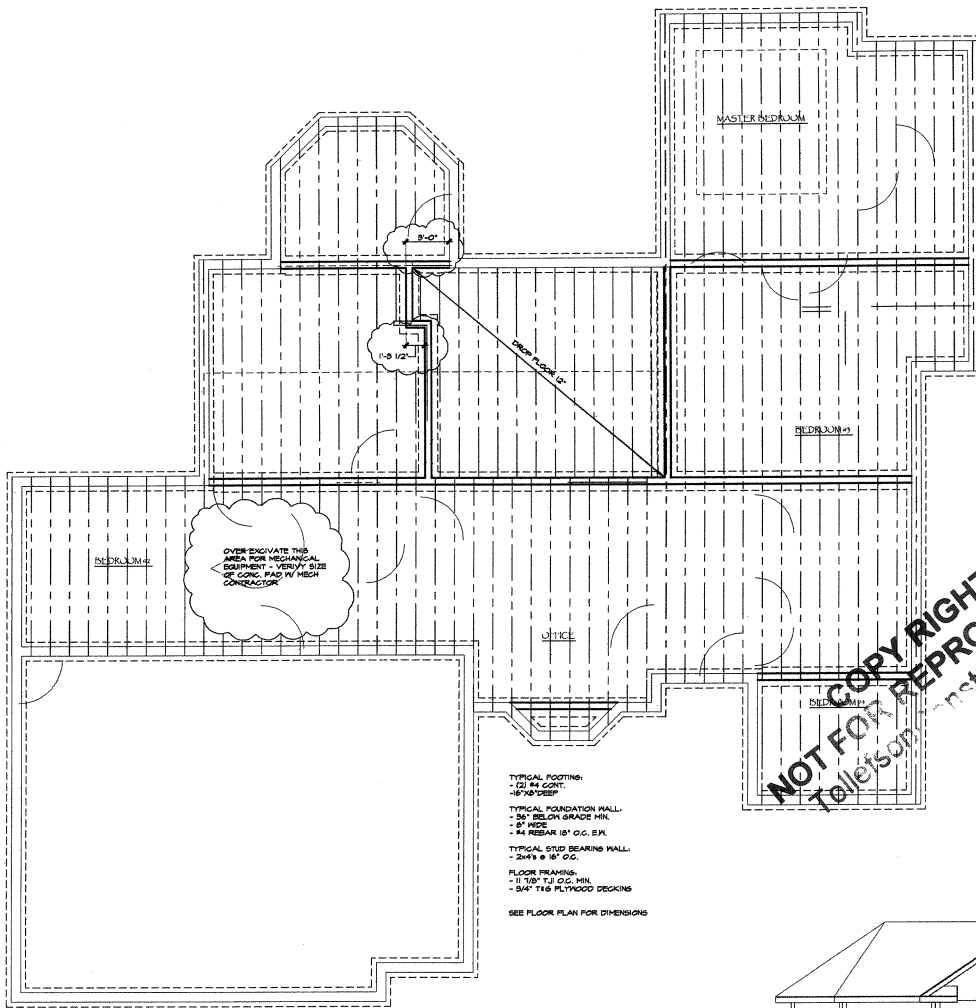
SITE PLAN
1" = 20'-0"



MAIN FLOOR PLAN
1/4" = 1'-0"

11.03.05

AI

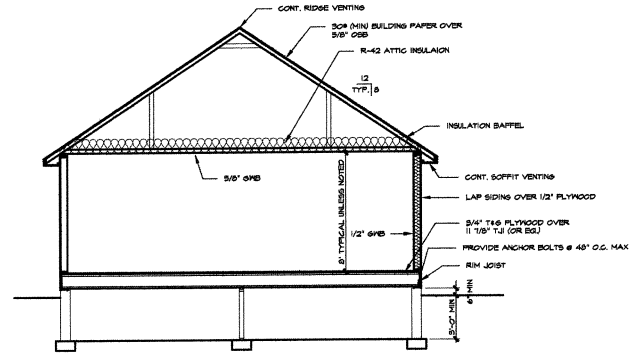


FOUNDATION PLAN

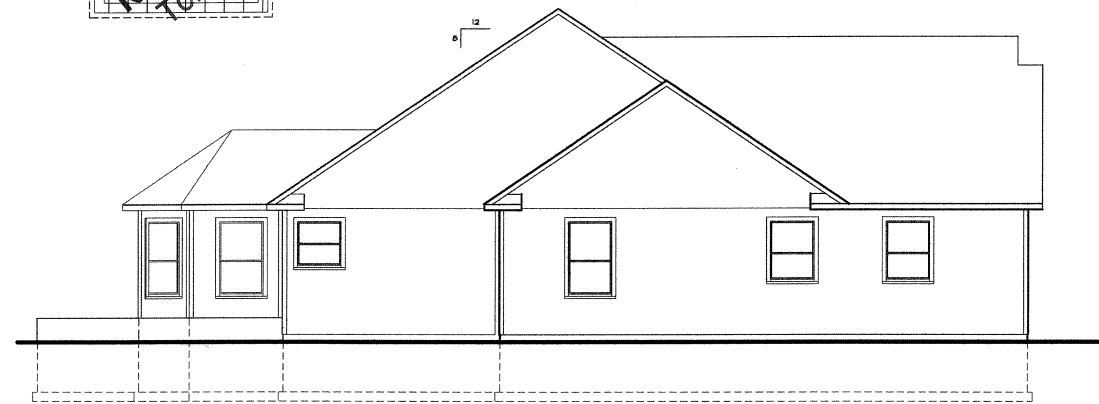
1/4" = 1'-0"

- TYPICAL FOOTING:
 - 12" RE CONC.
 - 16" x 8" DEEP
 - TYPICAL FOUNDATION WALL:
 - 5/8" RECON GRADE MIN.
 - 8" WIDE
 - 4" REBAR 18" O.C. E.K.
 - TYPICAL STUD BEARING WALL:
 - 2x4s @ 16" O.C.
 - FLOOR FRAMING:
 - 11 1/8" TJI O.G. MIN.
 - 5/4" T&G PLYWOOD DECKING
- SEE FLOOR PLAN FOR DIMENSIONS

NOT FOR REPRODUCTION
 Tabletson@instruction.com

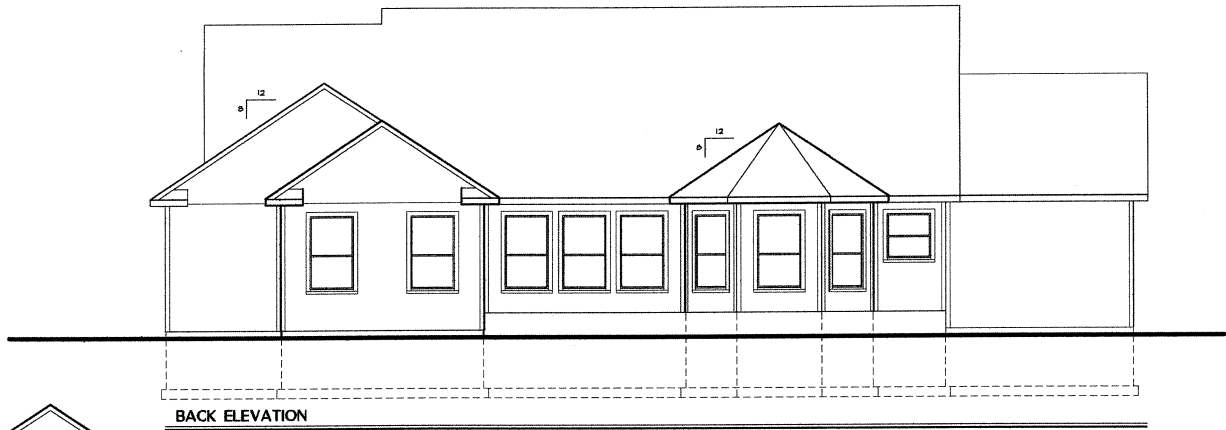


TYPICAL WALL SECTION



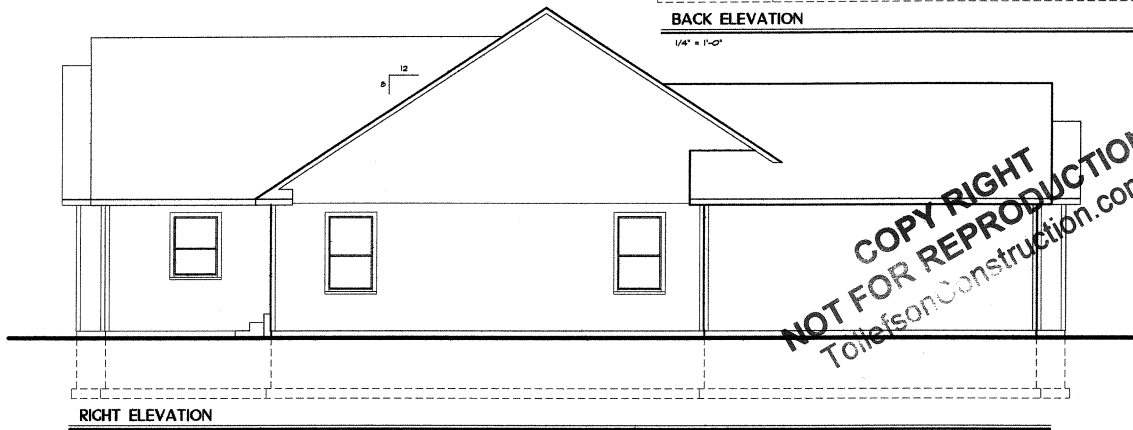
LEFT ELEVATION

1/4" = 1'-0"



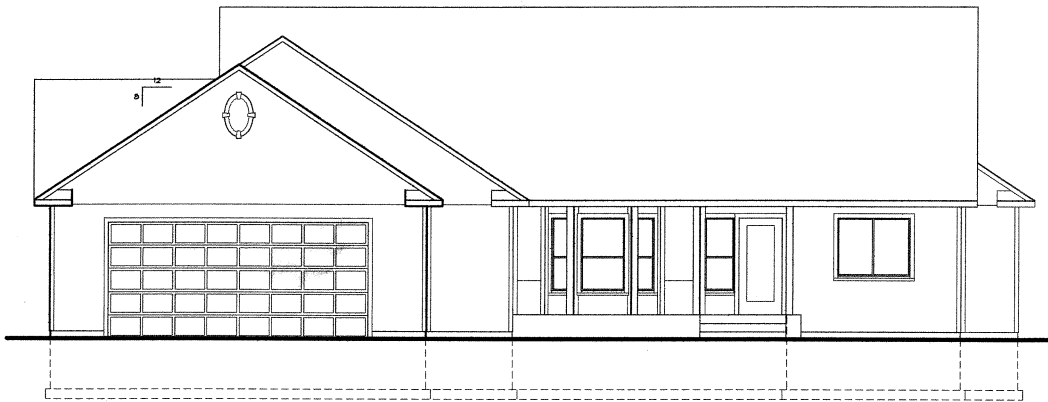
BACK ELEVATION

1/4" = 1'-0"



RIGHT ELEVATION

1/4" = 1'-0"



FRONT ELEVATION

1/4" = 1'-0"

COPY RIGHT
NOT FOR REPRODUCTION
TolietsonConstruction.com