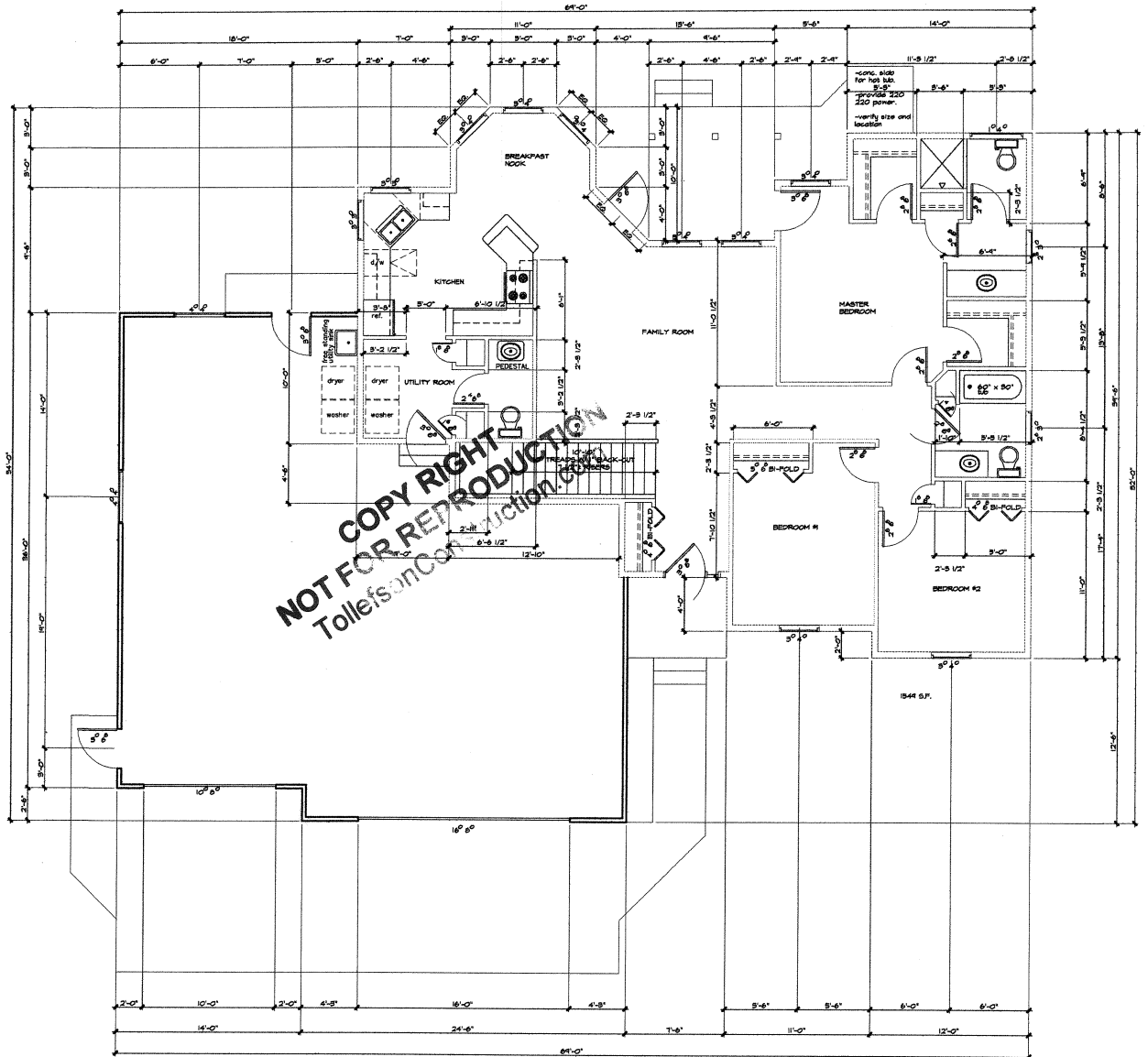
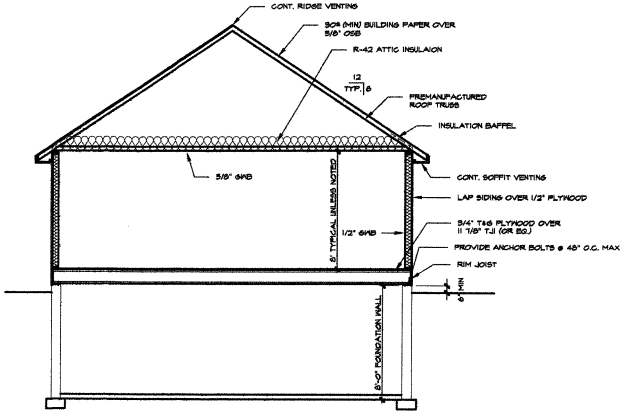


ROOF PLAN
1/8" = 1'-0"



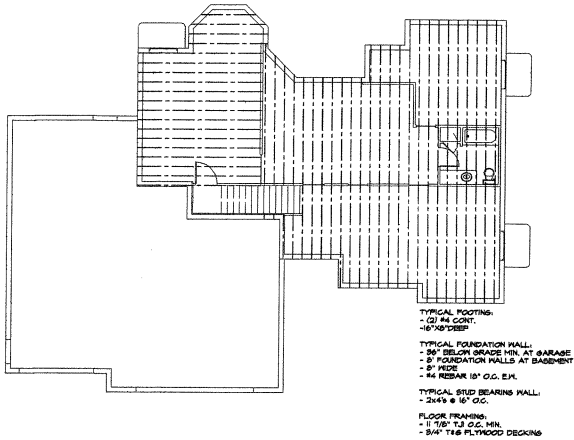
MAIN FLOOR PLAN

1/4" = 1'-0"



TYPICAL WALL SECTION

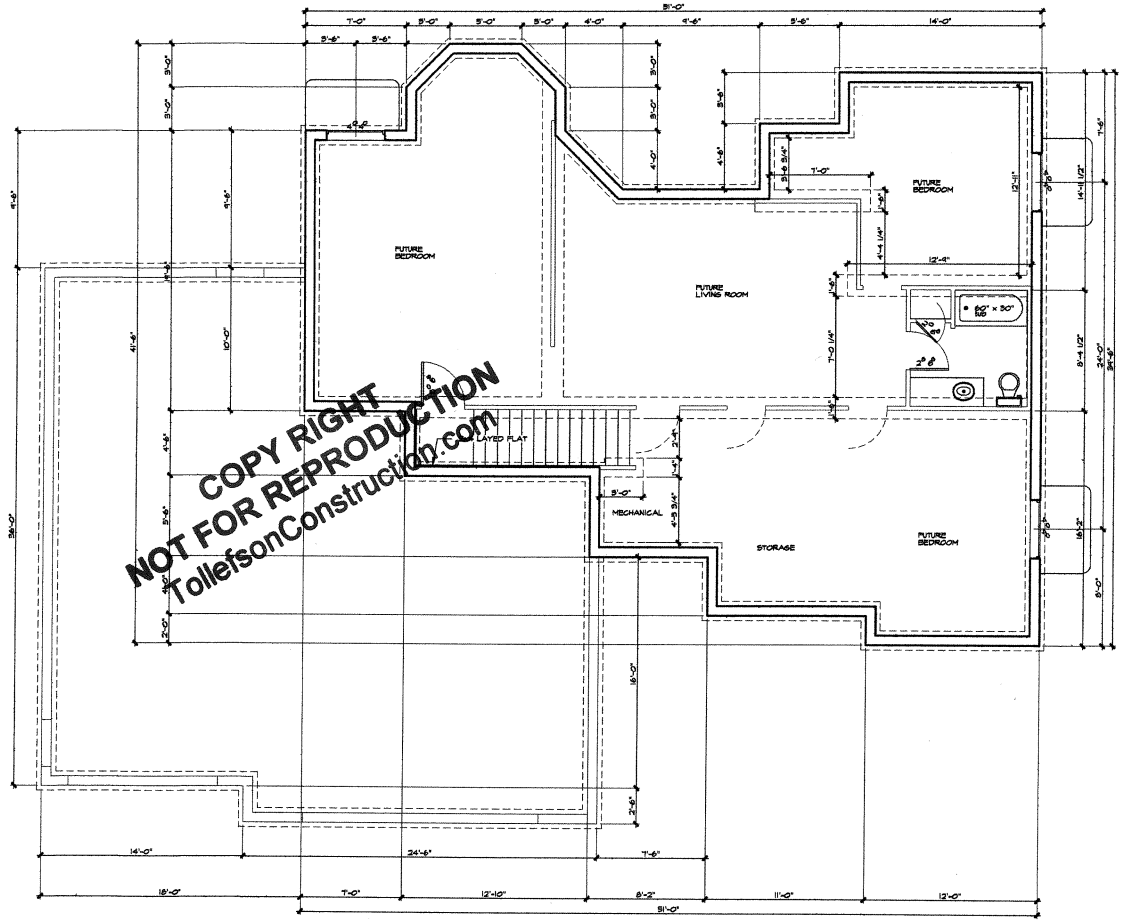
1/4" = 1'-0"



- TYPICAL FOOTING:
 - 21" Hx 30" W
 - 16" X 24" DEEP
- TYPICAL FOUNDATION WALL:
 - 8" TYP. BELOW GRADE W/ AT GARAGE
 - 8" FOUNDATION WALLS AT BASEMENT
 - 8" WIDE
 - #4 REBAR 18" O.C. E.H.
- TYPICAL GRIP BEARING WALL:
 - 2x4x8 @ 16" O.C.
- FLOOR FRAMING:
 - 1 1/8" T2 O.C. MIN.
 - 3/4" T&B FLYWOOD DECKING

FRAMING PLAN

1/8" = 1'-0"



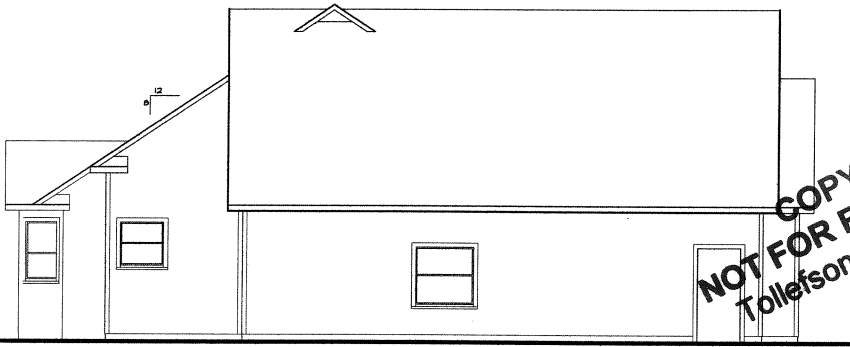
BASEMENT PLAN

1/4" = 1'-0"



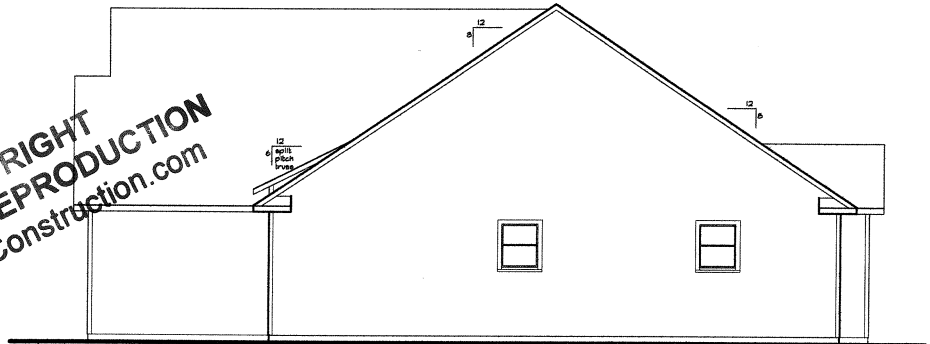
BACK ELEVATION

1/4" = 1'-0"



LEFT SIDE ELEVATION

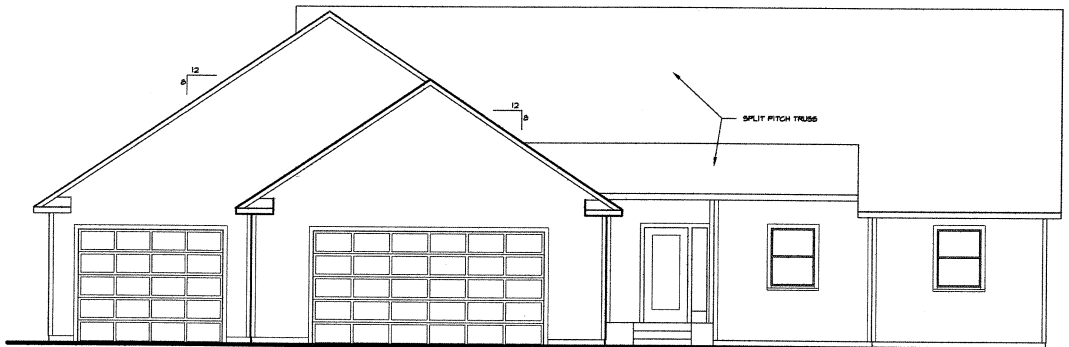
1/4" = 1'-0"



RIGHT SIDE ELEVATION

1/4" = 1'-0"

COPY RIGHT
NOT FOR REPRODUCTION
TollefsonConstruction.com



FRONT ELEVATION

1/4" = 1'-0"